

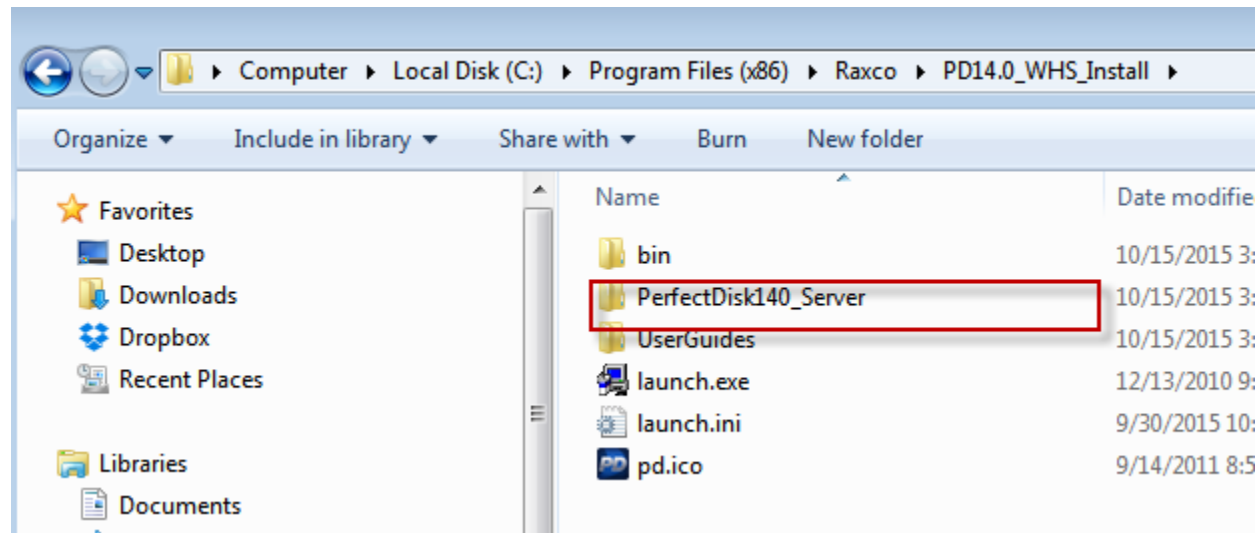
## Manually Installing PerfectDisk 14 Home Server on your Home Server

PerfectDisk 14 Home Server supports the following Home Servers:

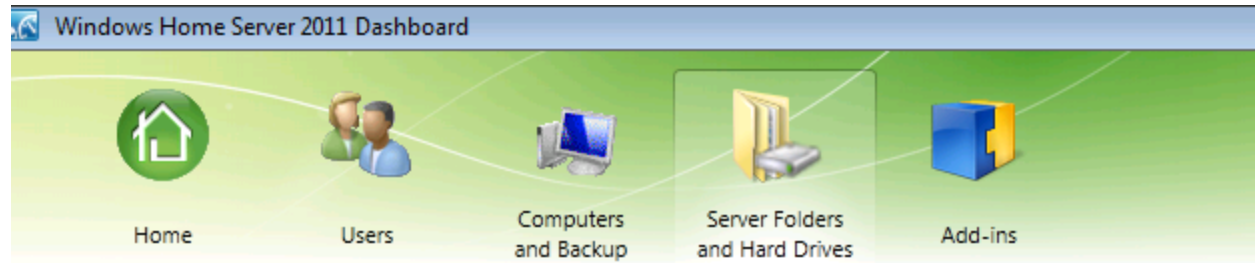
- Windows Home Server 2011 (also known as WHS V2)
- Server 2012 Essentials

PerfectDisk 14 Home Server does NOT support Home Server V1 (Server 2003 based)

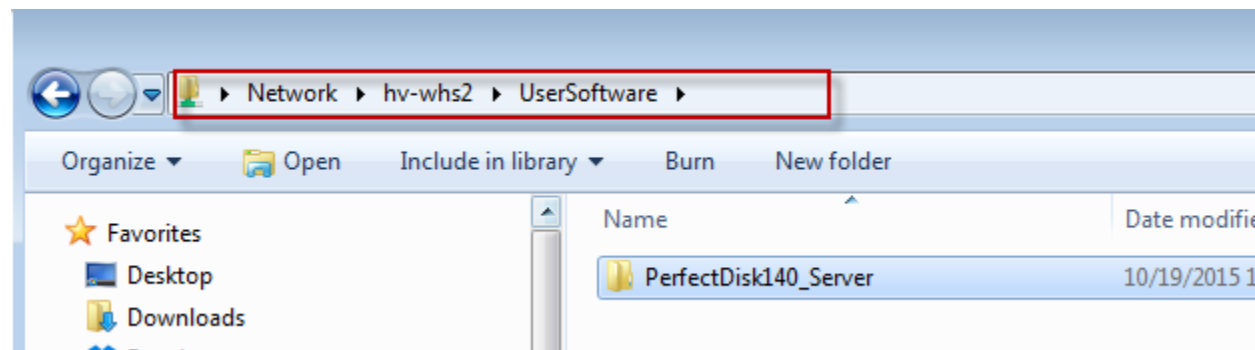
1. Copy the **PerfectDisk140\_Server** folder to your Windows Home Server 2011 or Server 2012 Essentials system.
  - The **PerfectDisk140\_Server** folder should have been extracted to:  
**C:\Program Files (x86)\Raxco\PD14\_WHS\_Install** if you are on a 64-bit computer or **C:\Program Files\Raxco\PD14\_WHS\_Install** if you are on a 32-bit computer



In the example below, the PerfectDisk Home Server installation software has been copied to the UserSoftware share that is found on the Windows Home Server 2011 server.



Server Folders		Hard Drives		
Name	Description	Location	Free space	Status
Client Computer Backu...	Client Compute...	D:\ServerFolders\Client Computer Back...	70.3 GB	
Documents	Documents	D:\ServerFolders\Documents	70.3 GB	
Music	Music	D:\ServerFolders\Music	70.3 GB	
Pictures	Pictures	D:\ServerFolders\Pictures	70.3 GB	
Recorded TV	Recorded TV	D:\ServerFolders\Recorded TV	70.3 GB	
UserSoftware	User Software	D:\ServerFolders\UserSoftware	70.3 GB	
Videos	Videos	D:\ServerFolders\Videos	70.3 GB	



2. Remote Desktop (RDP) into your Windows Home Server 2011 or your Server 2012 Essentials system.
3. Browse to where the **PerfectDisk140\_Server** folder is found
4. Open the **PerfectDisk140\_Server** folder
5. Double click **InstallPD.exe** to install PerfectDisk 14 on your Home Server.

